

RF Lite

Pouch edition

Entry-level system for the automatic coding of flat-form bags and pouches

The RF Lite Pouch Edition utilises vacuum technology to 'pluck' the product down from a stack, before guiding it past the printer, ensuring accurate code placement, every time. The compact system uses maintenance-free thermal inkjet technology to produce crisp, consistent prints at impressive speeds.



High-resolution

Fitted with a thermal inkjet printer, the RF Lite can print excellent quality (up to 600dpi) text, barcodes, logos and more.



Operator friendly

Easy to use, minimal training needed. Printer requires no maintenance and cartridges are changed in seconds.



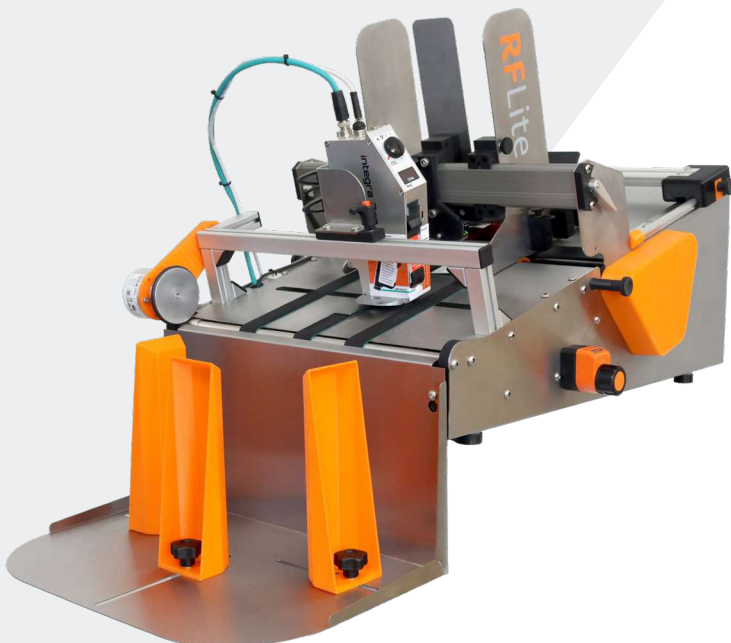
Increased efficiency

Ideal for automating the coding process for the first time. Allows labour to be utilised elsewhere in production.



Cost-effective

Comparatively low upfront cost. Excellent return on investment (ROI). One system can serve multiple lines.



Made in Britain

Along with all of our other feeding and handling systems, the RF Lite has been carefully designed, engineered and manufactured here in our Hertfordshire factory; something unique to us that we are incredibly proud of.

As a one-of-a-kind off-line coding system, the RF Lite has not only helped us to expand our product range, but it has also assisted many small UK businesses in their growth, allowing them to scale up their coding processes alongside increased demand. Now some of those businesses aren't so small anymore.

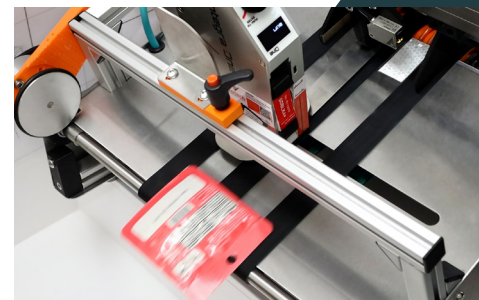
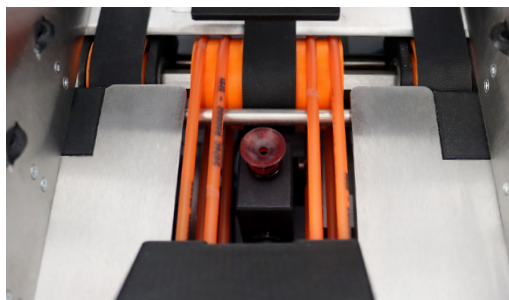
To book a free demonstration, call +44 (0) 1707 393 700
or email sales@rotechmachines.com



PRODUCT SPECIFICATIONS

RF Lite Pouch

Footprint (L x W x H)	Without outfeed catcher	587 x 515 x 662 mm
	With outfeed catcher	887 x 515 x 662 mm
Weight	Without outfeed catcher	20 kg
	With outfeed catcher	22 kg
Packaging dimensions	External packaging dimensions	700 x 600 x 700 mm
	Gross weight (max)	25 kg
Product sizes	Minimum	100 (leading edge) x 80 mm
	Maximum	230 (leading edge) x 160 mm
Throughput (Package dependent)	Recommended daily throughput	Up to 14,000 products
	Max product throughput	60 per minute
Speed	Preset speed	18m/min
Controls	Start	Pushbutton (green)
	Stop	Pushbutton (red)
	Reset	Pushbutton (white, illuminated)
	Feed	Push button (Amber)
Hopper adjustments	Manually adjustable on side	Single lock levers - both hoppers
	Minimum width	100 mm
	Maximum width	230 mm
Outfeed belts	Central belt 25 mm wide	Fixed position
	2 x outer belts 25 mm wide	Individual adjustment to suit product width
Electrical	Inlet: 240/115 vac 50/60 Hz	Switched IEC C14 socket to rear control panel Fused 2A
	Outlet: (Printer supply) 240/115 vac 50/60 Hz unfused	IEC panel mount C13 socket printer supply not to exceed 1.5A
Air	5 Bar - clean dry supply - 8mm diameter connection	6 litres per minute at 5 bar
Other	Printer mounting (standard)	TIJ (other printers on request)
	Encoder mounting	Optional - details on request
	Optional extras	Shingling conveyor



To book a free demonstration, call **+44 (0) 1707 393 700**
or email sales@rotechmachines.com