

Rotech company overview

Leaders in delivering quality, cost-effective coding & marking solutions to the packaging industry

190+

Years of industry experience

700+

Number of customers

1997

Providing solutions since

Our story

Founded in 1997 and privately owned, Hertfordshire-based Rotech has grown to become one of the most respected coding and marking specialists in the UK.

Our innovative range of coding and marking equipment, coupled with our friendly, can-do attitude, allows us to provide our customers with a valuable end-to-end service. From consultancy and advice, right through to product installation and ongoing support.

Rotech's success is due to our extensive industry knowledge and ability to listen and solve problems. No matter how small or significant, we will always deliver the right solution in terms of efficiency, reliability, and cost.

Excellence underpins all that we do at Rotech, so if you're looking to work with knowledgeable professionals, you've arrived at the right place.

Innovative solutions for all your product and packaging coding requirements

Coding and marking

We offer a range of quality coders, ideal for printing clear, concise, late-stage information directly onto primary, secondary, and tertiary packaging. These systems can be seamlessly integrated into production lines to work alongside existing packaging equipment, causing minimal disruption. For off-line applications that require a label, we can offer various labelling systems; either from our own product range or supplied from a leading label manufacturer.

Thermal inkjet technology

At Rotech, we're advocates for thermal inkjet. This mess-free, maintenance-free technology is ideal for printing high-quality text and codes at high-speeds, onto both porous and non-porous substrates.



Maintenance-free



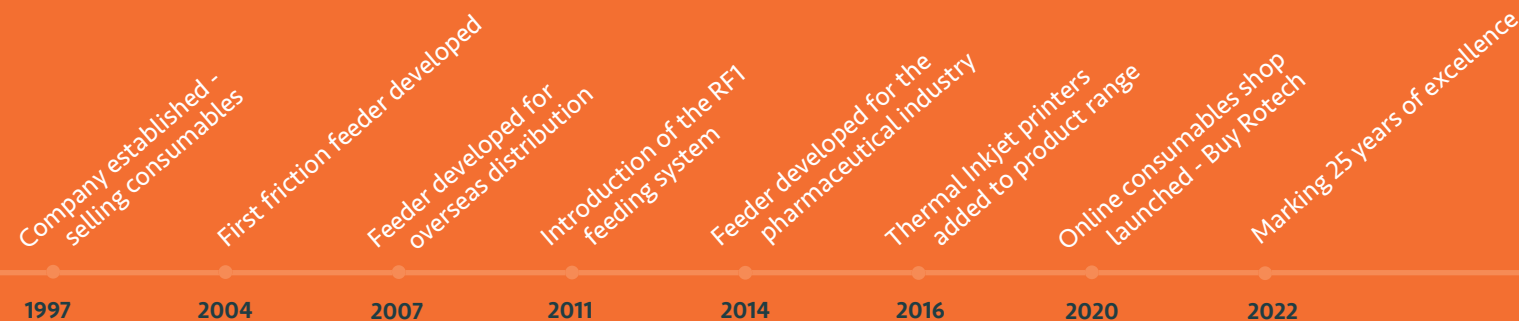
Simple integration



Crisp, clear prints



Cost-effective



What we do

As experts in our field, we have a solution for almost any coding and marking application or challenge, whether that be a need to meet new industry regulations, or to replace labels on outer cases, by printing directly on to the box.

Projects are met by our team with enthusiasm, care and commitment, to guarantee total customer satisfaction. From initial consultation to installation, we will work with you to deliver the solution that meets the exact needs of your business, now and well into the future.

Our aftercare services are second-to-none – we provide training, technical support, preventative maintenance services and more, all to ensure that your coding processes run smoothly, with minimal downtime.

Feeding and handling

For some applications, coding away from the production line (off-line) is favourable, offering flexibility and dependability where needed.

Our RF Range of feeding systems have been specifically designed to handle packaging in its flat-form, and when fitted with a coder/labeller, offer a complete, high-speed coding and marking solution.

We have a system to suit all applications, from the RF Lite – a simple, low-cost system, ideal for startups looking to automate their date coding process, to our flagship RF Compliance – a sophisticated system designed to comply with the heavily-regulated pharmaceutical industry.



Reduce costs



Maximise efficiency

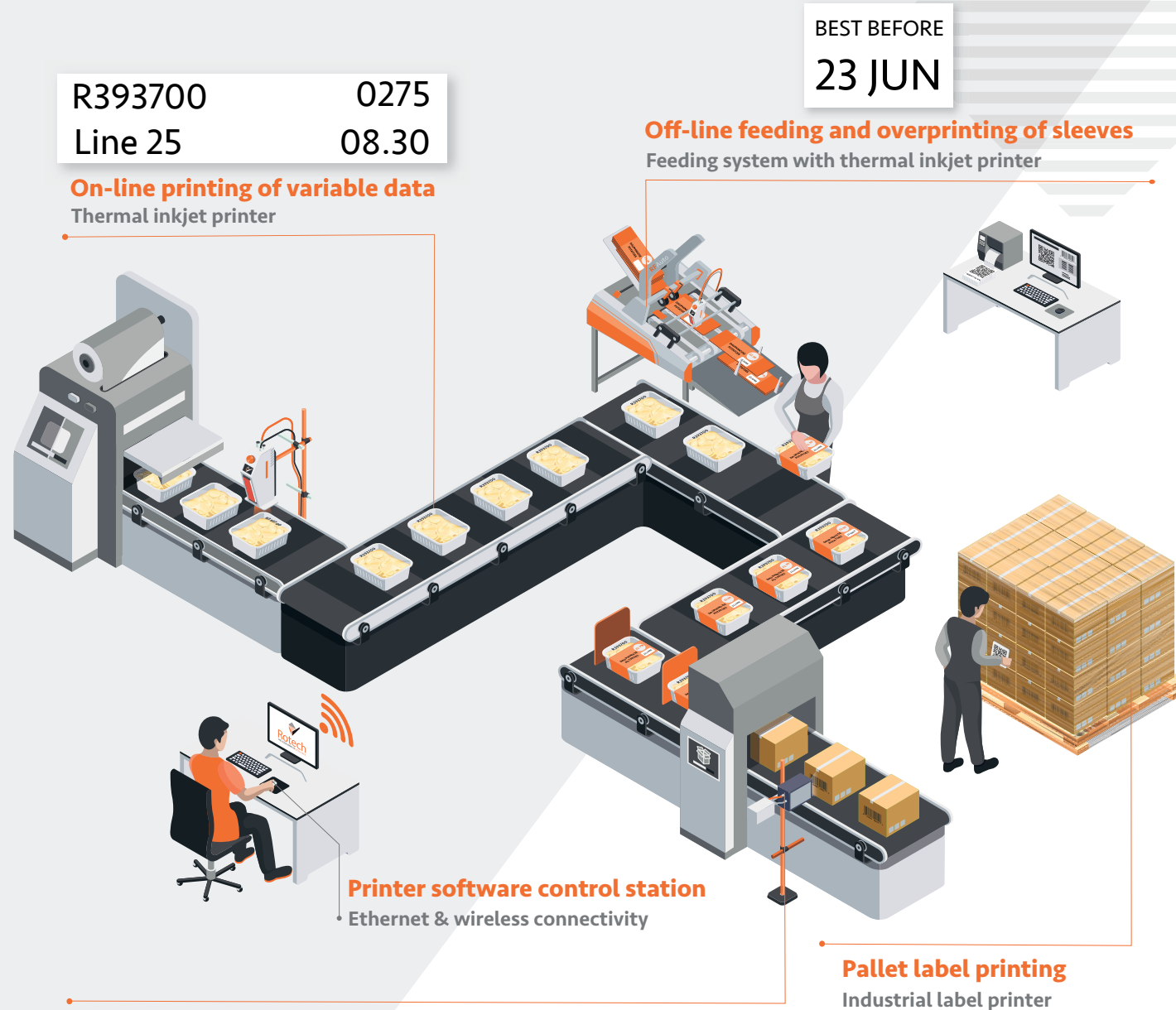


Save time

You're in safe hands

Maximise efficiency whilst achieving consistent, high-quality codes at every stage of your primary, secondary and tertiary packaging process.

Here's where you may expect to see Rotech equipment on a packaging line:



Direct printing of outer cases
Large area inkjet printer

Supplier: ROTECH MACHINES LTD
Product: Dauphinoise Potatoes
QTY: 8
Order Number: PO2522



ROTECH READY MEAL
PO:2522
QTY: 50

Ship from: Rotech Machines Ltd
Ship to: Food Supermarket, UK



(01)78364829984792085743

Benefits

Why work with Rotech?



A partnership you can trust

We communicate effectively with our customers throughout the lifetime of every project, to ensure a strong working relationship is developed and maintained.

We are committed to providing solutions that maximise efficiency without compromise.



Engineered in Britain

All of our feeding systems are designed and built by our team of highly-skilled engineers, here in our UK factory. This gives us flexibility, as we can customise our machines if the application requires, something unique to Rotech.



Leaders in innovation

We invest heavily in the development of our systems. Our in-house design and production team are continually looking at how we deliver the most reliable, cost-effective solutions.

We also stay up-to-date with any packaging trends and advances in technology, ensuring we are always one step ahead.

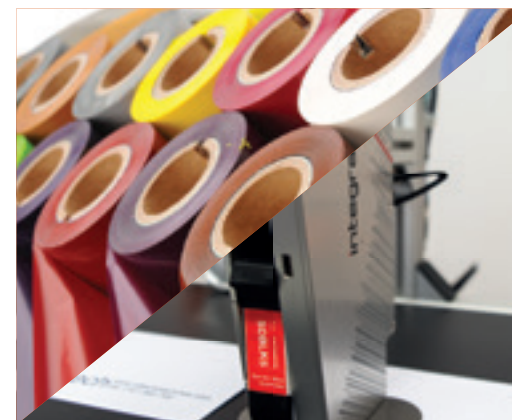


Aftercare fuelled by excellence

When you invest in a Rotech solution, you unlock a wealth of aftercare services.

From on-site service visits and equipment training, to technical advice and support, we endeavour to keep your lines running smoothly, while delivering the best possible customer service.

Buy Rotech



We created an online portal to make ordering consumables a simple process. To create an account, email sales@rotechmachines.com.

- Even more competitive pricing
- Stock visibility
- Detailed product information
- Account purchase history

Our customers

Over our 25 years of business, we have built up a huge portfolio of customers, with the need to print variable information onto everything from tiny cosmetic cartons to outer cases for contract packing and logistics.

Industries

Different industries face different challenges and requirements when it comes to coding and marking their products. Our customers operate in the following industries:



Cosmetics



Food & drink



Horticulture



Household goods



Industrial



Medical



Pet supplies



Pharmaceuticals



Automotive



Contract packing



Logistics



Building products

Applications

Whatever the packaging or product type, we can help find a solution that suits you. We have vast experience applying data to all of the following:

- | | | | |
|-----------------------|--------------------|-----------------------|------------------|
| • Aluminium foil lids | • Cables | • Metal components | • Sachets |
| • Anti-counterfeit | • Cartons | • Outer cases & boxes | • Sleeves |
| • Bags & pouches | • Corrugate | • Plastic pipes | • Stick packs |
| • Blister cards | • Extrusion | • Plastic tubs | • Tetra Pak |
| • Bottles | • Flow wrap & film | • Plants tags | • Tube laminates |
| • Bottle caps | • Hoses | • Polystyrene foam | • Tyvek |



We're proud to work with

Some of the companies we have provided solutions for:



“We have found our Rotech batch coding machines to be thoroughly reliable and extremely cost effective... I would have no hesitation in recommending Rotech”

Aqua Oleum



Rotech Machines Limited
1 Brownfields Court
Welwyn Garden City
Hertfordshire
AL7 1AJ
United Kingdom

+44 (0) 1707 393700
Opening Times

Monday – Thursday 8:30am to 5:30pm
Friday 8:30am to 4:30pm

