

Rotech HP Integra One

Compact thermal inkjet printer for system integration

Unique “all-in-one” design with data entry via OLED display and iWheel device. Extremely compact and very easy to install and integrate. True “plug and play” printing.

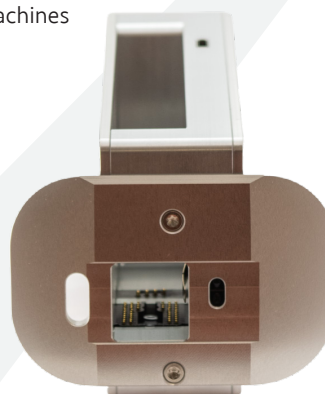
Using proven HP technology, the Integra One offers excellent print resolution and it's compatibility with both water and solvent based inks makes it suitable for printing variable data onto a wide variety of both porous and non-porous substrates.

IDEAL FOR

- ✓ Printing on to labels, card, paper, flexible packaging and containers
- ✓ Mounting directly onto labelling systems and VFFS/HFFS packaging machines

TECHNICAL SPECIFICATIONS

Maximum print height: 12.7mm
 Maximum print speed at 300dpi: Up to 180m/min*
 DPI: up to 900
 IP Rating: IP65 protection optional
 Weight: 700g
 Dimensions (LxWxH): 186x86x98 mm
 Ambient temperature: 5 to 40°C
 Relative humidity (non-condensing): 10 to 90%



SOFTWARE VERSIONS:

	Print	Basic	Advanced	Pro/HiSpeed
Max print speed	60	30	90/60*	90/180/60*
Max resolution vertical	300/600 dpi	300/600 dpi	300/600 dpi	300/600 dpi
Max resolution horizontal	50-900 dpi	50-900 dpi	50-900 dpi	50-900 dpi
Max text length at 300dpi (m)	2	2	2	6
Text field	✓	✓	✓	✓
Counter	✓	-	✓	✓
Time	✓	✓	✓	✓
Date	✓	✓	✓	✓
Date Offset	✓	-	✓	✓
Logo	✓	✓	✓	✓
Variables	✓	-	✓	✓
Action fields	-	-	✓	✓
Barcode	-	-	✓	✓
2D Code	-	-	✓	✓
Data transfer via USB stick	✓	✓	✓	✓
Ethernet	Option	✓	✓	✓
Password protection	Option	Option	Option	✓